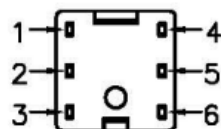
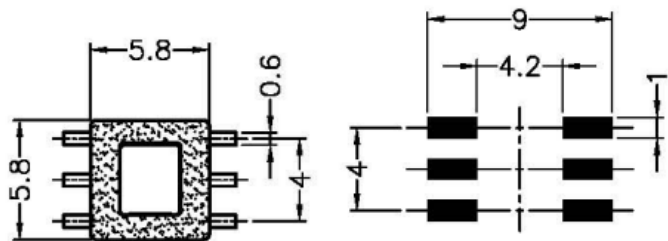
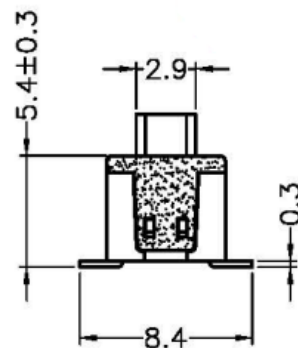


RoHS

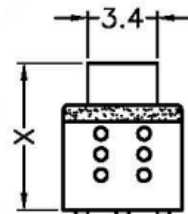
View A
scale 1:1

FREE			LOCK		
1	2	3	1	2	3
4	5	6	4	5	6

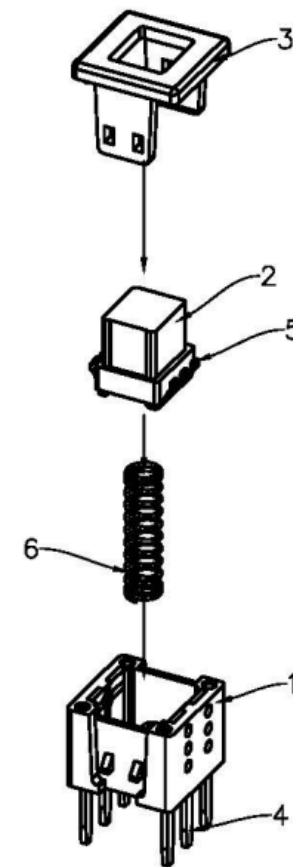


View A

FREE	7.4
LOCK	5.2



SPECIFICATION	
1.环境温度(Operating Temp)	-20℃~+80℃
2.相对湿度(Working Humidity)	5%~35%
3.额定规格(Rated Value)	DC50V/30mA
4.接触电阻(Contact Resistance)	100mΩ max
5.绝缘电阻(Insulation Resistance)	100MΩ min
6.耐电压(Withstand Voltage)	250Vac/60S
7.动作力(Operating Force)	250±50gf
8.使用寿命(Operating Life)	100,000 cycle



PG-2058S

6	Spring	1PCS	Carbon Steel
5	Contact Chip	2PCS	Silver-Coated Copper
4	Terminals	6PCS	Copper plated Silver
3	Panel	1PCS	PBT or Nylon White
2	Keypad	1PCS	PBT or Nylon White
1	Housing	1PCS	PBT or Nylon Black

东莞市三荣部品电子有限公司

DONGGUANG SAMYOUNG PARTS ELECTRONICS CO., LTD.

普通公差
common tolerance:0~5±0.15;
5~10±0.3;
10~30±0.5;角度angular:
±0.5°;制图
DRAWN日期
DATE审核
CHECKED核准
APPROVED

JEFF

2018-4-18

JEFF

JEFF

单位
UNIT比例
SCALE尺寸
SIZE

品名Title:

5.8平头贴片无锁开关
Push Switch

料号Part NO.

PG-2058S

版本
EDITON日期
DATE变更说明
ALTERATION DESCRIPTION修改
SIGN序号
NO.零件名称
PART NAME数量
Q'TY材质
MATERIAL

8

7

8

9